

MUSTANG MINUTES

Pinellas Central Elementary Newsletter

Abigail Cannata
Principal

Nicole Kavaliauskas
Assistant Principal



**THIS YEAR WE ARE DIGGING
DEEPER TO DISCOVER
POSSIBILITIES**

keful • grateful • thankful • grate

**PCE DIGGING CREW
IN PROGRESS**



UPCOMING EVENTS

- 11/17/21: Great American Teach-In
- 11/19/21: Enterprise Village for 5th grade
- 11/22/21- 11/26 : Thanksgiving Break
- 12/1/21: School Resumes



thankful • grateful • thankful • grateful

PBIS Calendar

Date	Activity
August 27 th , 2021	Hat Day-25 points
September 10 th , 2021	Crazy Sock Day-25 points
*October 7 th , 2021	Sport Spirit Day-75 points
October 22nd, 2021(Q)	Superhero Day/ Fancy Dress-Up Day-200 Points
November 12 th , 2021	Storytime w/Admin-75 points
December 10 th , 2021	Hot Chocolate/Movie-100 points
December 17th, 2021 (Q)	Snow Glo BINGO-300 points
January 14 th , 2022	Lunch w/Principal-100 points
January 28 th , 2022	Twin Day-50 points
February 11 th , 2022	Movie Day/Popcorn-75 points
February 25 th , 2022	Boardgames-75 points
March 11th, 2022 (Q)	Duct tape a principal to the wall-400 Points
March 25 th , 2022	Dance Party-100 points
April 8 th , 2022	Kickball Teachers vs. Students -200 points (Students Sign-up ahead of time)
April 22 nd , 2022	Mismatch Clothes Day-50 points
May 13 th , 2022	Popsicle/Extra Recess-75 points
May 26, 2022 (Q)	Mini-Field Day-800 Points

*THURSDAY

10 points/ day =50 points per week

Everything = 1 point

Zero point value for behavior tracker

Trade in for activities = "redeem" points

Q1 =410

Q2 =450 Savings= 860

Q3 =470 Savings= 1330

Q4 =460 Savings =1790

STUDENT REGISTRATION

If you need assistance with updating your phone numbers, email addresses, or emergency contacts, in your student's portal or need information regarding registration for Pre-K 3, VPK, or Kindergarten call our DMT Mrs. Gipson at 727-547-7853 ext 2007 or email her at Gipsont@pcsb.org

keful • grateful • thankful • grate

Thanksgiving Break Meal Distribution

We are offering free 5 day meal packages.
5 breakfasts and 5 lunches per child that attends PCE.

**Pick up is Thursday, 11/18 between 9
a.m.- 10a.m.**

Please visit the site below or scan the QR code
to fill out the form no later than Tuesday 11/2/21
in order to have a box ready for pickup.

<https://tinyurl.com/e46fmb2b>



MEDIA CENTER INFORMATION



The book fair was a huge success!

Thanks for all of your support!

Because of you I am going to be able to buy a ton of new books for the library!!

Hello Families!
If you still have library books from previous school years, please return them as soon as you can.

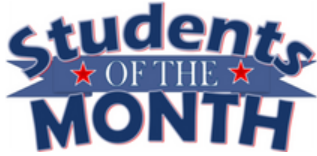


ful • grateful • thankful • grate

STUDENT SERVICES

Character Education Word of the Month: Responsibility

- Doing your best and taking ownership for your words and actions.



Students who show exemplary RESPONSIBILITY throughout this month will be nominated for Student of the Month and will be recognized on the morning news show which is broadcast to the school and accessible through Canvas.

ateful • grateful • thankful • gra

PARENT CORNER

Respect begins at home

Model how to be respectful by being respectful at home. Make eye contact when speaking to each other. Do your best to remain calm when discussing important things, even if they are emotionally charged topics. Model taking deep breaths to gather your thoughts before speaking what may be on your mind. This is a hard thing to do, even as adults, but so important to teach our children at home. Children see how we respond to them and to other adults, especially when we might be upset or on edge. They will model themselves after our behavior and sometimes that comes out at school when children being disrespectful to adults who work hard to help them be successful every day. We are teaching students at PCE that mistakes help us learn and grow and it is good for children to know that adults can learn from their mistakes as well. Take ownership for your behaviors and actions and show them that even adults make mistakes and can apologize when they mess up, too!

STUDENT SERVICES

ASCA Career Development Month

During the month of November, the American School Counselor Association encourages school counselors to focus on career development. Our school has a career development platform available to students through Clever called Kuder Galaxy®. Galaxy utilizes the power of play through an interactive space-themed, online platform that allows students to learn through video, games, activities, and rewards. Characters like astronauts, aliens, and space creatures promote equity by avoiding common assumptions about gender roles and prestige, and occupational stereotypes. Rooted in career development theory and grade-specific career readiness themes, the system lets students at each grade level step foot on six planets — each representing a different work environment: Realistic (the doers), Investigative (the thinkers), Artistic (the creators), Social (the helpers), Enterprising (the persuaders), and Conventional (the organizers). Galaxy also introduces students to 120 careers that help students think beyond their neighborhood. Galaxy helps broaden young learners' job vocabulary as it expands their view of their future. Galaxy enables students to uncover their individual interests, develop a sense of self, use relevant information to explore different careers, learn how what they're doing in school connects to what they could do later in life, and complete activities linked to developmentally- and age-appropriate concepts.

thankful • grateful • thankful • grateful

Personal Safety/Child Trafficking Lessons

Florida's Department of Education requires all students in grades K-5 receive child trafficking prevention education. In Pinellas County, these lessons are taught by school counselors. This month, the School Counselor will be meeting with students in classrooms to discuss child safety using age-appropriate resources from Monique Burr's Child Safety Matters Curriculum. These lessons are designed to help students identify healthy choices and learn what to do if they find themselves in unsafe or uncomfortable situations. Students will be encouraged to share what they have learned with their families and additional materials will be sent home after the lessons are delivered.

FAMILY/COMMUNITY LIAISON NEWS



PCE is allowed to have Volunteers on campus this year!! If you would like to volunteer and or become a mentor, you will have to complete our volunteer registration form. Please read the next page on how this process works.

Great American Teach-In is November 17th!! It will be in person this year! If you, friends, or family would like to come to the school this year to participate please contact Katie Murray.



PCE is looking for a All Pro Dad's Team Leader. If you are interested in learning more information please contact Katie Murray.

Our fifth-grade students will be attending Enterprise Village on November 19th 2021!

We are in need 6 of volunteers for this unique event.

Enterprise Village teaches students about the free enterprise system, what it takes to run a business and a community, how to write checks, use a debit card and make wise consumer choices. During their visit, each student actually “works” a designated job; they can be anything from Mayor to a Bank of America teller to a counter clerk at McDonald’s to one of many other positions in this incredible mini city. They get “paid” for their work and on their breaks become the consumers. This is something you almost have to see to believe!!

If you have any questions, please contact the Family and Community Liaison Kathleen Murray at murraykat@pcsb.org or 727-547-7853 ext. 2001

thankful • grateful • thankful • g

thankful • grateful • thankful • grateful

VOLUNTEER INFORMATION

Get Involved with our Future

Volunteer, Mentor, Tutor, Speakers, PTA/PTSA, School Advisory Council, Business & Community Partnerships and Family Engagement and more...

The Office of Strategic Partnerships, Family & Community Relations mission seeks to formalize relationships between the district, schools, and community to bring resources together to support student success in our schools. We hope we can count on your support!

Complete the online registration and upload your driver's license or a photo legal ID. Your application will be processed, and you will receive an email approval with a User ID and password to log your volunteer hours.

Sign up online at :
<https://asd.pcsb.org/schoolwiresforms/volunteer/>

What do I need to get started?

- The online form will take approximately 5 to 15 minutes to complete.
- Please use a desk top or laptop computer to complete the online application. Do not use a cell phone. For the best experience, please use the Chrome browser and devices with full size displays.
- A Government Issued photo ID is required to upload to the form in order to process your application. Example: Driver's License
- Do not upload a Passport or a Military ID.
- If you are a current student at a Pinellas County School, you are not required to provide an ID Card.
- If you are unable to upload a clear image of your identification, you may email a picture or scanned document to murraykat@pcsb.org
- You will be required to submit your Social Security Number (SSN) for the purpose of a Criminal Background Screening.
- If you are a current student at a Pinellas County School, you are not required to provide your Social Security Number.
- Be prepared to disclose ALL criminal history to avoid ineligibility.
- You do not need to disclose traffic tickets.
- An e-mail will be sent to the e-mail address you provide to inform you of the status of your application. Your e-mail will remain private.
- Please make sure you have access to the e-mail you enter, as it is our primary means of communication with you.
- You must have an email address before completing this online application.
- If you are a current volunteer, you do not need to complete another volunteer application. Click on the volunteer link to reactivate your profile. Volunteers are required to reactivate their application each year, prior to volunteering.

If you have any questions, please contact the Family and Community Liaison Kathleen Murray at murraykat@pcsb.org or 727-547-7853 ext. 2001

PTA

COMING IN DECEMBER!



ful • grateful • thankful • grate

THANK YOU

Thank you for
making the
Trunk-Or-Trunk
a HUGE success!!!!



THE NURSES NOTES

Bullying Prevention

Bullying, by definition, is when a person seeks to harm, intimidate, or coerce someone who is perceived as vulnerable. Almost every student is a victim of bullying at least once throughout their years at school. There are some ways we as a staff team can help in preventing this.

According to the National Education Association here are the next ways to help prevent bullying:

- Establish strong antibullying policies and legislation that include the definitions of bullying and cyberbullying, clear consequences for such behaviors, and procedures for reporting and appeals.
- Provide training for all school employees—including education support professionals—in the prevention and intervention of all bullying behaviors.
- Provide professional development materials and resources to school employees.
- Conduct an annual school climate survey. A positive school climate enhances the work environment for everyone— students, staff, and parents.
- Develop and implement educational programs designed to help students recognize, understand, prevent, oppose, and eliminate bullying, while emphasizing respect for all.

“Children can’t learn in a climate of fear. One caring adult, who takes the time to listen, who steps in when he or she sees bullying, can make a world of difference to a bullied child. Our students are counting on us.” ~NEA President Dennis van Roekel

• grateful • thankful • grateful



FRIENDLY REMINDER

If your student is sick, please keep them home. If your student is exhibiting a fever, cough, vomiting or diarrhea they must stay home. They will need a doctor's note or a negative Covid test to return.

If your student has tested positive, has a positive household member, has been exposed or has a pending Covid test, please keep them home and contact our front office at 727-547-7853.

Thank you for helping to keep our Mustang family safe and healthy.

nkful • grateful • thankful • gra

Summer Explorations

ELEMENTARY SCHOOL EDITION

myON Summer Challenge



Participate in the myON Weekly Challenges and the Summer-Long Challenges. There are two ways to win prizes!

Go to this website to see the details, then log on to myON in Clever - <https://pinellas.renaissance.com/2021-summer-reading/>

Istation



Log on to Istation from Clever and spend 30-60 minutes each week actively engaged in your instructional path reading activities.

Dreambox

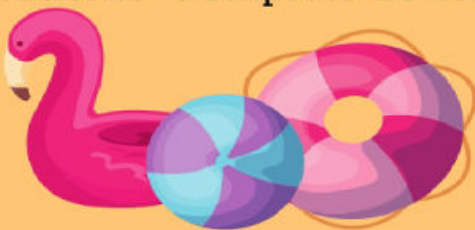


Exercise your math skills this summer with Dreambox.

Click on the Dreambox app in Clever.

K-2 Students: Complete 5 lessons per week

3-5 Students: Complete 10 lessons per week



thankful • grateful • thankful • g

ankful • grateful • thankful • gr

ADOPT-A-CLASS

What is it? Adopt-A-Classroom increases opportunity for student success by encouraging local businesses, organizations or individuals in our community to become an involved and proud supporter of our students!. 100% of your donation goes back to teacher of your choice.

One hundred percent of your donation goes directly to the class or program of your choice, enhancing the teacher's limited classroom budget thus enabling the teacher to purchase educational items that will enhance the classroom and the student's education. Our goal is to get every teacher adopted!

For more information and or to Adopt-A-Class, please contact the Family and Community Liaison Kathleen Murray at murraykat@pcsb.org or 727-547-7853 ext. 2001

A HUGE THANK YOU TO THESE AMAZING SPONSORS FOR ADOPTING-A-CLASS!

Mark Yonke	Rahul Lipare
Juaning Yang	Jyoti Kaldate
Juanqing Yang	Jamie Wilder
Gary Agundo	Ryan Vogal
Giau Pham	Quy Tang
Cara Keelin	

THANK
YOU

Thank you to our community partners for your donations and support of our school this year.

thankful • grateful • thankful • gra



Winn✓Dixie

